

Benchmarking Deep Learning Approaches for RANO Criteria Classification in Glioblastoma

Ana Matoso^{1,2*}, Catarina Passarinho¹, Marta P. Loureiro¹, José Maria Moreira², Pedro Vilela³, Patrícia Figueiredo¹, Rita G Nunes¹

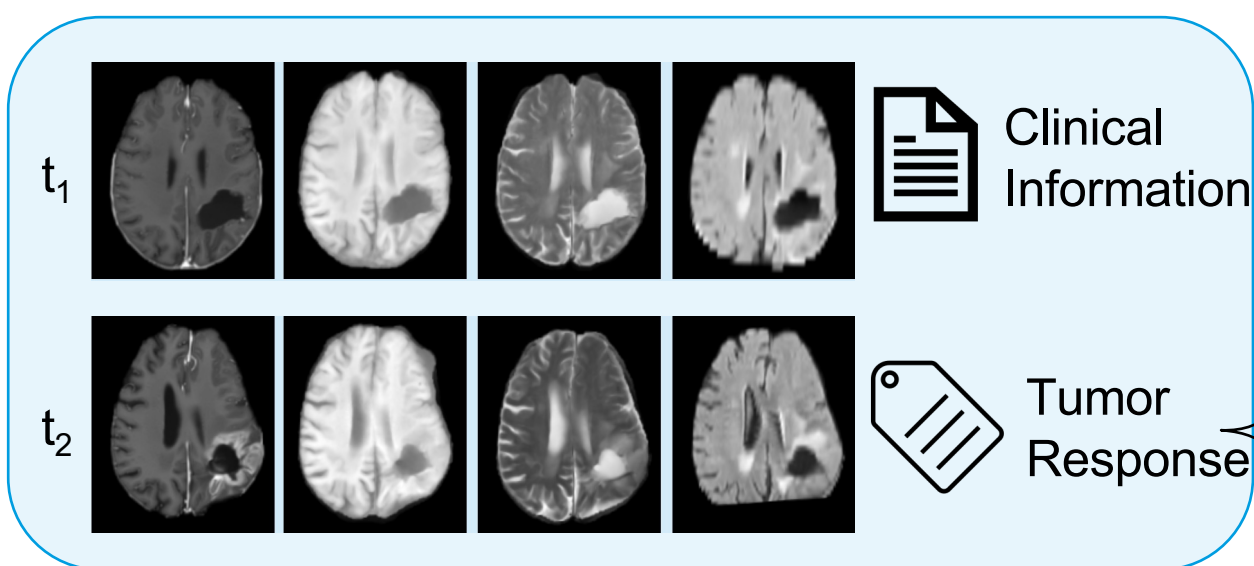
¹Institute for Systems and Robotics – Lisboa and Department of Bioengineering, Instituto Superior Técnico, Portugal; ²Learning Health, Hospital da Luz, Lisbon, Portugal; ³Imaging Department, Hospital da Luz, Lisbon, Portugal;

Results

- Glioblastoma is the most malignant brain cancer
- Longitudinal Assessment is needed
- Patients do frequent scans to monitor disease

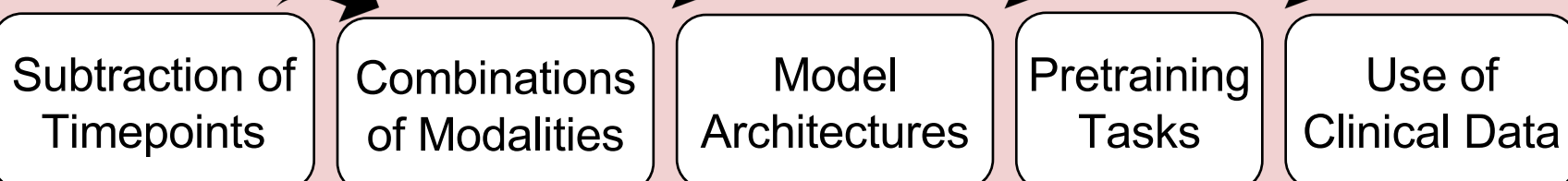
Response Assessment
in Neuro-Oncology
(RANO) criteria

Data

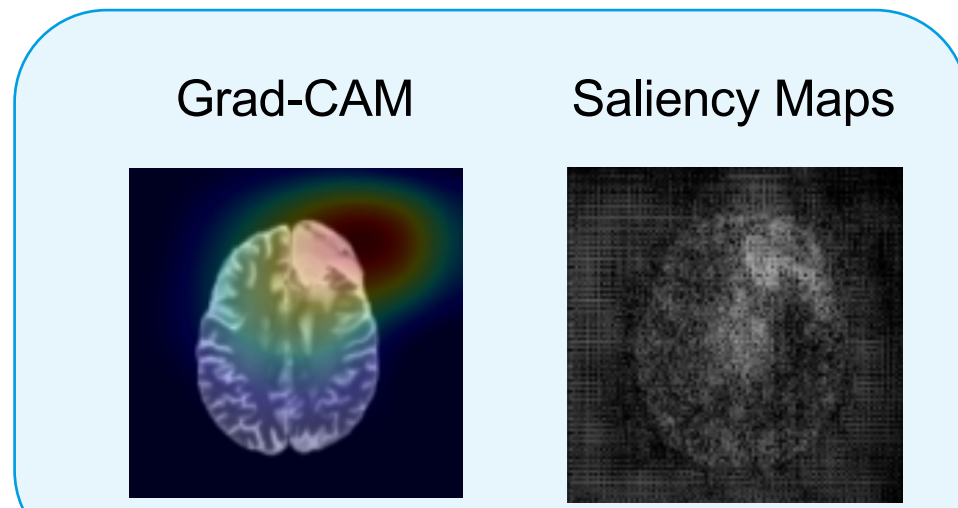


Training and Testing

Sequentially Tested Approaches (best option chosen at each stage):



Explainability



Check the preprint

